

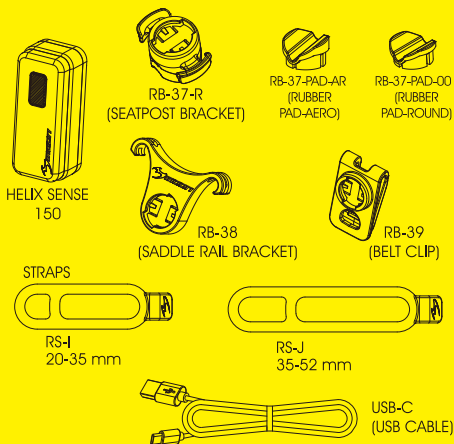


HELIX SENSE 150 MANUAL

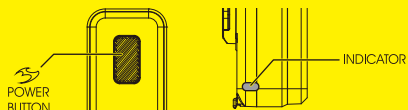


Read this manual carefully before using and keep for future reference. Visit www.moon-sport.com for manual updates. The specifications and design are subject to change without notice.

CONTENTS



OPERATION



- ON / OFF : Press & hold 1s
- MODE SELECT : Click
- SENSE MODE : Double Click



- BATTERY CHECK : 1. Power off
- Click
 - > 11% BLUE 3s
 - ≤ 10% BLUE 3s

RUNTIME

	SENSE MODE					
	NIGHTTIME			DAYTIME		
	LUMEN	H:MIN	⚠ BRAKE SIGNAL	LUMEN	H:MIN	⚠ BRAKE SIGNAL
DAYFLASH	80	22:00	80LM ✓	150 DAYFLASH	14:00	80LM ✓
FLASH 1	20	20:00				
FLASH 2	40	5:30				
STEADY FLASH	5+40	4:00				
MODE 1	20	4:00				
MODE 2	5	11:00				

DOUBLE CLICK

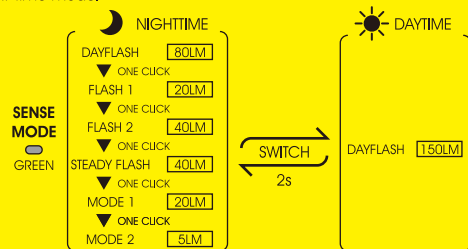
	STANDARD MODE			
	DEFAULT		VLS	
	LUMEN	H:MIN	VLS LUMEN	H:MIN
DAYFLASH	150	14:00	150 5	14:00 130:00
FLASH 1	40	10:00	150 5	3:20 55:00
FLASH 2	80	2:30	150 5	1:30 27:00
STEADY FLASH	5+80	2:00	150 5	1:20 14:00
MODE 1	50	1:30	50 5	1:30 12:00
MODE 2	5	12:00	50 5	1:30 12:00

* The stated runtime of each mode includes the BRAKE SIGNAL is enabled 60 times/hour.
 * It depends on how many time the BRAKE SIGNAL is used, the actual runtime may vary.

SENSE OPERATION

BRIGHTNESS SENSING

The built-in light sensor automatically switches between the NIGHT or DAY time mode.



MOTION SENSING

Braking Automatically turns brighter or steady lumen when braking.
Parking When no motion is detected.



VARIABLE LUMEN SYSTEM

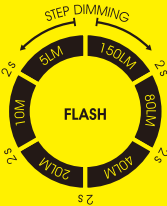


1. Select desired mode.
2. Press and hold to set lumen.
3. Release when reaching desired lumen.

* Light flashes twice when reaching the MAX or MIN lumen level.

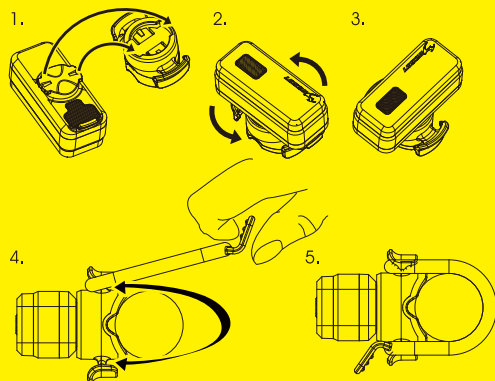
* Restore default mode: 1. Power off

2. Press 7s FLASH 3 TIMES BLUE

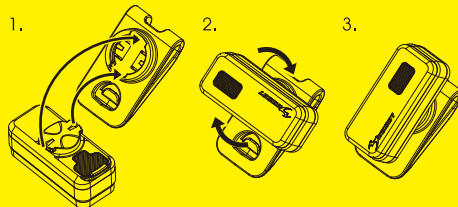


MOUNTING

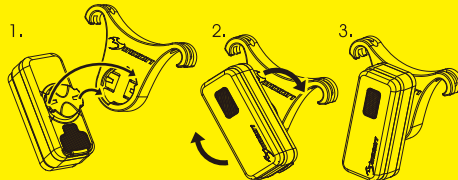
SEATPOST MOUNTING



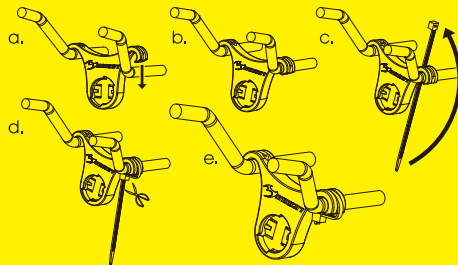
BELT CLIP MOUNTING



SADDLE RAIL MOUNTING



INSTALLATION:



AUTO SAFE MODE

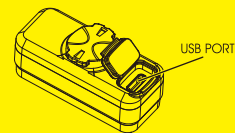


When the battery gets low, the light automatically enters the safe mode that reduces the light output and extend **1.5 hours runtime**.

* When the light is in the safe mode, all other functions will be temporarily **deactivated**.

CHARGING

1. Power off
2. Plug USB cable to USB port
3. Unplug after fully charged



- * Do not charge over 5V.
- * Keep away from flammable objects while charging.

BATTERY STATUS AND CHARGING INDICATOR

Low battery (Slow Flash) ≤10% BLUE

Auto safe (Quick Flash) BLUE

Charging (Double Flash) BLUE

Fully charged * 2:30hrs BLUE

WARNING

Before use, check local lighting laws and regulations. Avoid shining the light directly into anyone's eyes. Do not install near wireless cycling computers. Prevent blinding oncoming traffic — always angle the beam downward. Keep the light away from water; do not submerge it. Store in a cool, dry place. If stored long-term, recharge the light fully at least every 3 months.

WARRANTY

MOON Lights come with a **2-YEAR LIMITED WARRANTY**, and MOON batteries are covered for **180 days**, with both warranties effective from the date of purchase. This warranty covers any defects or malfunctions resulting from manufacturing or design issues.

The warranty does not apply to normal wear and tear, damage from using non-rechargeable batteries, or any problems caused by improper installation, misuse, accidents, negligence, or other mishandling. To request warranty service, customers should contact their authorized local MOON dealer, as we may need the product returned for evaluation.

For additional assistance, please email our customer service team at cs@moon-sport.com. Don't forget to register your warranty online at www.moon-sport.com to ensure full coverage.