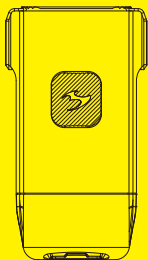


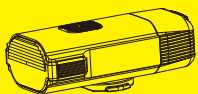


# RIGEL MANUAL



Read this manual carefully before using and keep for future reference. Visit [www.moon-sport.com](http://www.moon-sport.com) for manual updates. The specifications and design are subject to change without notice.

## CONTENTS



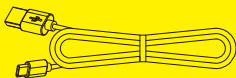
RIGEL



RB-43  
(HANDLEBAR BRACKET)



RB-42  
(MOON LIGHT ADAPTER  
FOR GOPRO MOUNT)

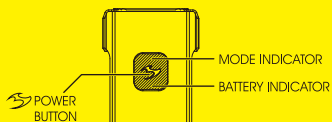


USB-C  
(USB CABLE)

### Optional accessories:

- USB-C-RM2020 (REMOTE CONTROL)
- RB-36 (HANDLEBAR CENTRE MOUNT)
- RB-41 (HELMET MOUNT)
- M-01 (HANDLEBAR COMBO MOUNT XL)
- M-03 (STEM CAP MOUNT)
- M-06 (AMPLITUDE RACE MOUNT)
- M-07 (HANDLEBAR MOUNT)

## OPERATION



ON / OFF : Press & hold

MODE SELECT : Click

STEADY / FLASH : Double Click

BATTERY CHECK : 1. Power off

2. Click

100% 50% 25% ≤10%

BLUE GREEN RED RED

INTELLIGENT : 1. Power off

2. Press 4s: NORMAL BLUE - - FLASH 1 TIME

INTELLIGENT GREEN - - FLASH 1 TIME

\* Mode memory: Resumes previous mode on next use.

## INTELLIGENT OPERATION

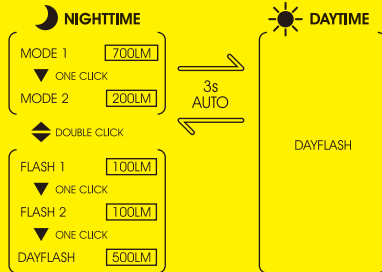


### INTELLIGENT BRIGHTNESS FUNCTION

Automatically turns to Stand By Mode (OFF) during daytime, and turns to selected mode at night or in dark area.



GREEN



## INTELLIGENT MOTION SENSING FUNCTION

### Parking

Automatically turns to standby mode when no action is detected.



## RUNTIME

ANSI FL1	INTELLIGENT MODE				DAYTIME	
	NIGHTTIME		DAYTIME		VLS LUMEN	H:MIN
LUMEN	H:MIN	VLS LUMEN	H:MIN	VLS LUMEN		
MODE 1	700	1:45	700 50	1:45 23:00	DAYFLASH 700 50	30:00 200:00
MODE 2	200	6:30	700 50	1:45 23:00		
FLASH 1	100	50:00	700 50	10:00 100:00		
FLASH 2	100	32:00	700 50	6:00 55:00		
DAYFLASH	500	51:00	700 50	30:00 200:00		
DEFAULT / NORMAL DEPENDS ON MODE LUMENS						

## VARIABLE LUMEN SYSTEM



- Select desired mode.
- Press and hold to adjust lumen.
- Release at desired lumen.

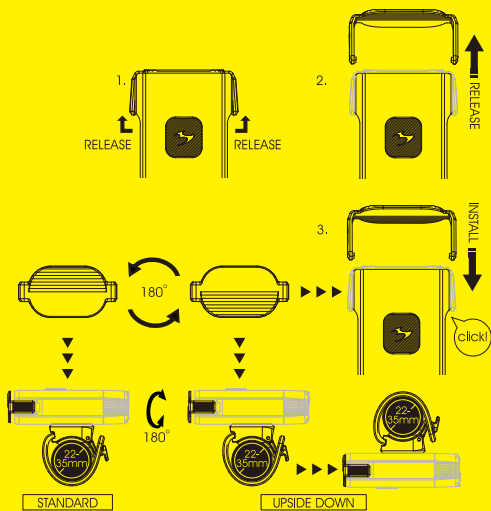
\* Light flashes twice at MAX or MIN lumen.

\* Restore default mode:

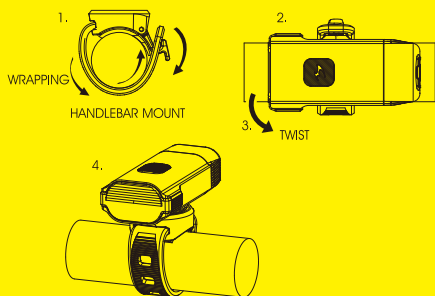
- Power off
- Press 7s: BLUE - - FLASH 3 TIMES



# ROTATABLE ANTI-DAZZLING LENS

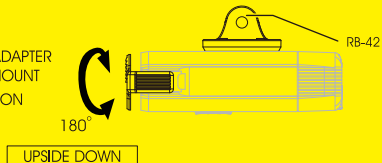


## HANDLEBAR MOUNTING



## GOPRO MOUNT

MOON LIGHT ADAPTER FOR GOPRO MOUNT  
LENS INSTALLATION



## CHARGING

1. Power off.
2. Plug USB cable to USB port.
3. Unplug after fully charged.



- \* Do not charge over 5V.
- \* Keep away from flammable objects while charging.

## BATTERY LEVEL AND CHARGING INDICATOR

	100%	50%	25%	≤10%
Battery level	BLUE	GREEN	RED	RED (Slow Flash)
Charging (Double Flash)	BLUE	Fully charged * 3:00hrs		BLUE

## OVERHEAT PROTECTION

The overheat protection device can ensure the bicycle light in a good running temperature condition, so that to protect the LEDs without burning case. If the light is in high temperature during operation, it will dim the light output.

## WARNING

Before use, check local lighting laws and regulations.  
Avoid shining the light directly into anyone's eyes.  
Do not install near wireless cycling computers.  
Prevent blinding oncoming traffic — always angle the beam downward.  
Keep the light away from water; do not submerge it.  
Store in a cool, dry place.  
If stored long-term, recharge the light fully at least every 3 months.

## WARRANTY

MOON Lights come with a **2-YEAR LIMITED WARRANTY**, and MOON batteries are covered for **180 days**, with both warranties effective from the date of purchase. This warranty covers any defects or malfunctions resulting from manufacturing or design issues.

The warranty does not apply to normal wear and tear, damage from using non-rechargeable batteries, or any problems caused by improper installation, misuse, accidents, negligence, or other mishandling. To request warranty service, customers should contact their authorized local MOON dealer, as we may need the product returned for evaluation.

For additional assistance, please email our customer service team at [cs@moon-sport.com](mailto:cs@moon-sport.com). Don't forget to register your warranty online at [www.moon-sport.com](http://www.moon-sport.com) to ensure full coverage.